

JAZZ™ Band,
Regardless of
Bone Quality⁽⁴⁾

JAZZ™ Band Decreases Stress on Bone

Thanks to its width, JAZZ™ Band distributes stress over a large surface, providing unique stability, regardless of bone quality.



Easy Correction of the Sagittal Plane and the Frontal Plane⁽⁵⁾

With its simple and powerful tensioner, JAZZ™ Band allows postero-medial translation and all other correction maneuvers.

With suitable rod bending of the connecting rods, JAZZ™ Band eliminates the risk of flat back.

Bone Preservation

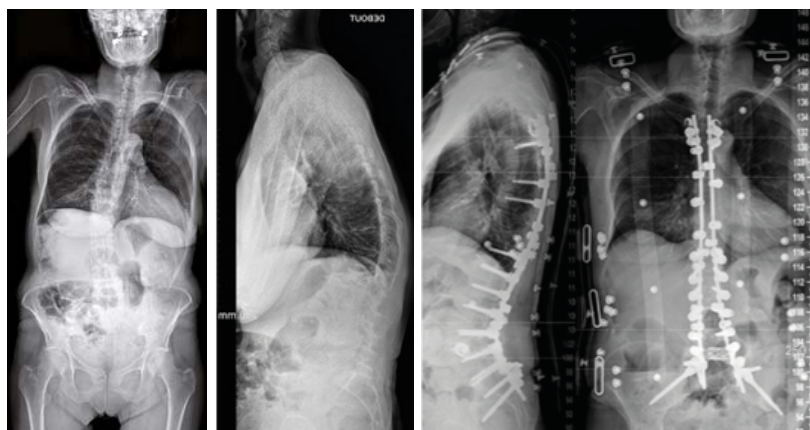
By avoiding the use of pedicle screws, JAZZ™ Band reduces the risk of comorbidities and offers the surgeon a maximum of open options for the patient.

⁽⁴⁾ Pedicle screw augmentation with polyethylene tape: a biomechanical study in the osteoporotic thoracolumbar spine. Hamasaki T, Tanaka N, Kim J, Okada M, Ochi M, Hutton WC. *J Spinal Disord Tech.* 2010 Apr; 23(2):127-32.

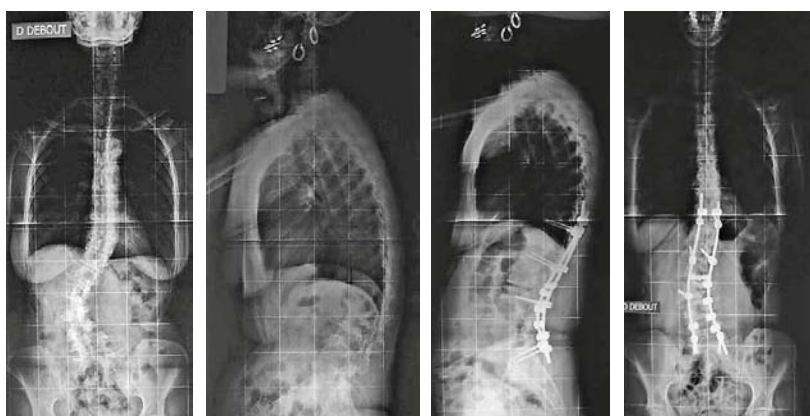
⁽⁵⁾ Hybrid constructs for tridimensional correction of the thoracic spine in adolescent idiopathic scoliosis: a comparative analysis of universal clamps versus hooks. Ilharreborde B, Even J, Lefevre Y, Fitoussi F, Presedo A, Penneçot GF, Mazda K. *Spine.* 2010 Feb 1;35(3):306-14.

Reduced X-Rays Irradiation⁽⁶⁾

By decreasing the number of pedicle screws, the JAZZ™ Band technology reduces the use of intraoperative radiography. It preserves the health of the patient and of the healthcare team.



F, 50 years, osteoporosis (T score 2.5). 10m maximum walking distance, T3 - pelvis arthrodesis with L4 osteotomy (vertebrae fracture)



*F, 52 years, evolutionary lumbar scoliosis, 32% ODI, Cobb 29.53, C7 tilt 5.75
28m follow up, ODI 28%, Cobb 11, tilt 1.51*

MRI Friendly Optimizes Postoperative Monitoring

With no metal in the pedicle and in the canal, JAZZ™ Band eliminates opacity and artifact issues. It allows an optimal postoperative follow-up of intra and extra-canalicular neurological structures by using MRI.

