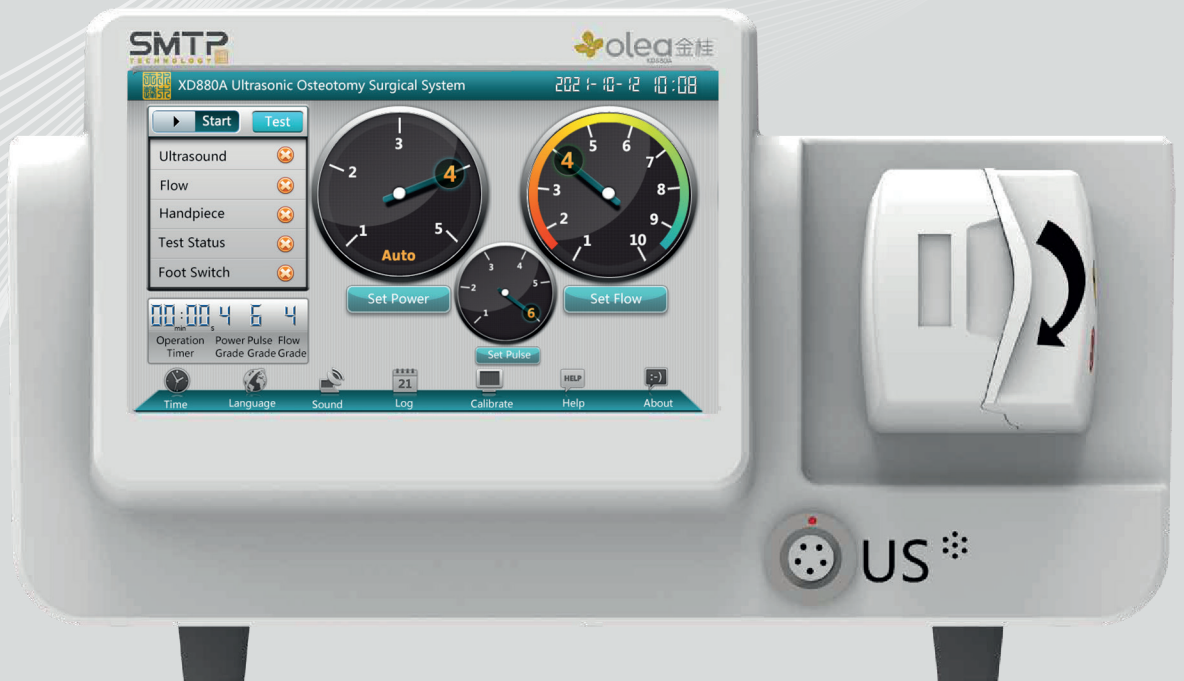


impla
net: The permanent balance

olea™



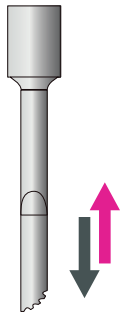
Ultrasonic Osteotomy
Surgical System
olea XD880A

Ultrasonic Osteotomy

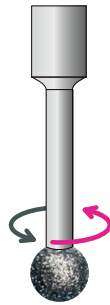
The XD880A is an ultrasonic osteotome that enables safer and more controlled bone removal while sparing **soft tissue** and **neural structures**.



SMTF



Drill



Efficient and precise cutting

The longitudinal non-rotating micro-vibration frequency is 39 KHz, 39000 oscillations / second with a 120µm amplitude.

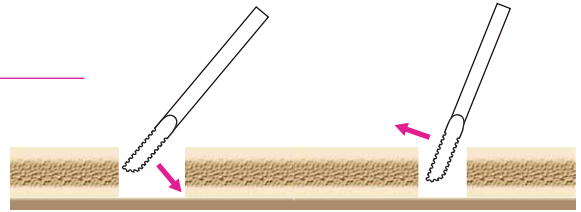


- Blade cooled by irrigation system
- Low noise
- Low heat release in handpiece

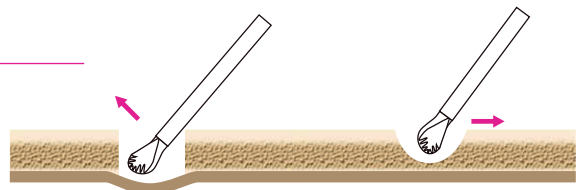
Safety:

choice of Tips

Bilateral Scalpel with serrations



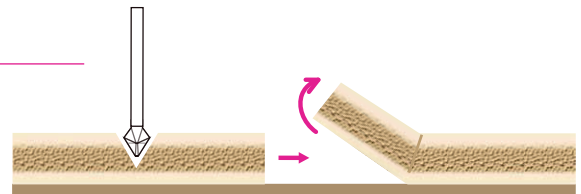
Curette with teeth



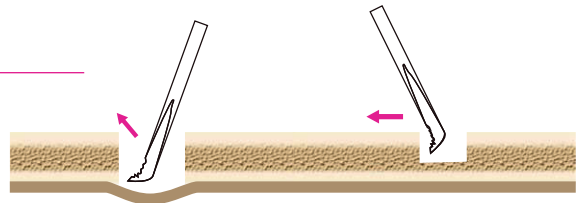
Spiral-shaped scalpel



V-shaped Scalpel



Hook-shaped Scalpel with serrations

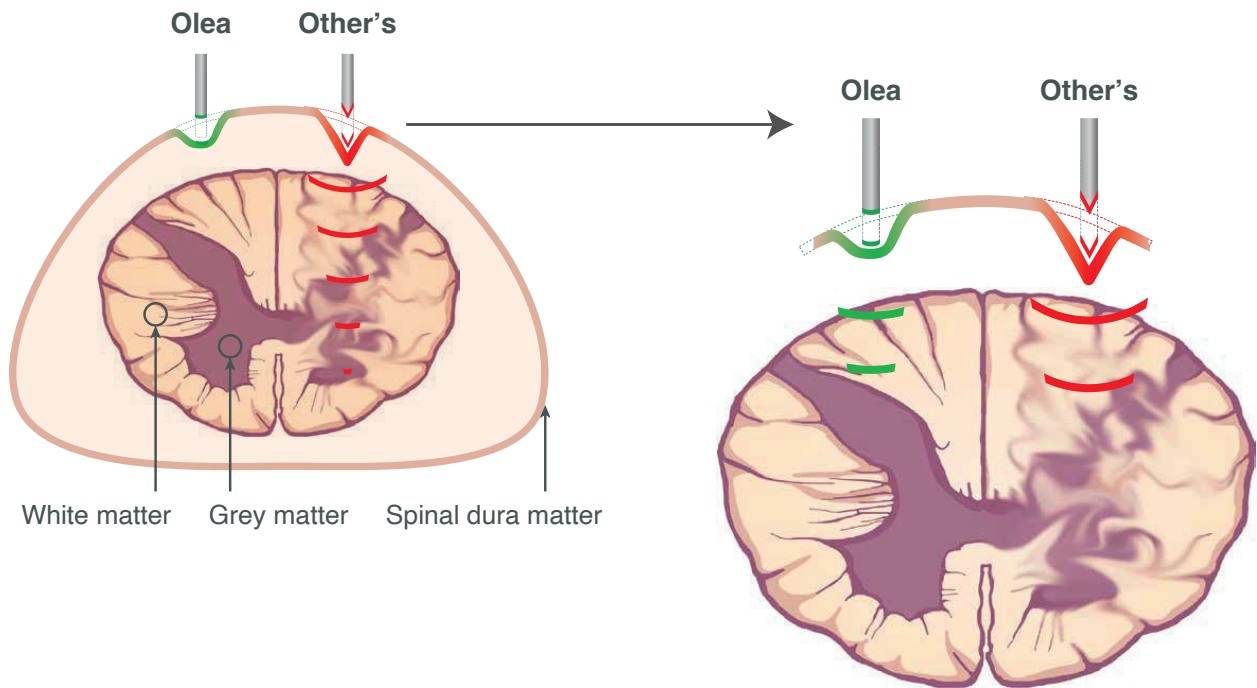


A wide range of lengths is available to suit many applications.



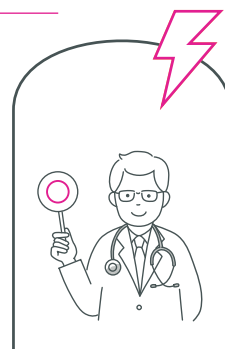
Safety:
for patients

Soft tissue protection

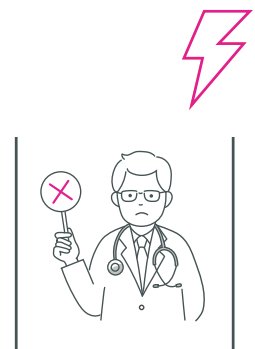


Higher protection

Class I type BF protects against electric shock, this higher electrical safety performance measure provides protection for doctors and patients.



Class I Type BF



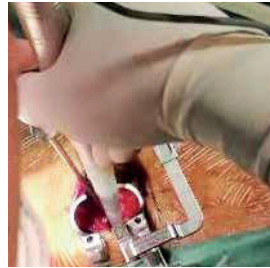
Class I Type B

Wide Range of Clinical Applications

A valuable tool in cutting, drilling and grinding in spine surgery, neurosurgery, orthopedic surgery, joint surgery and endoscopic surgery



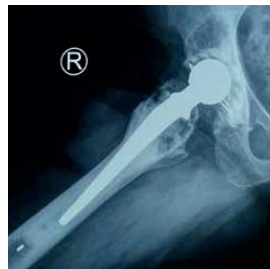
Spine surgery



Neurosurgery



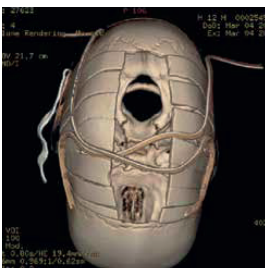
Joint surgery



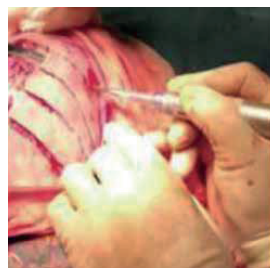
Hand



Foot



Otolaryngology



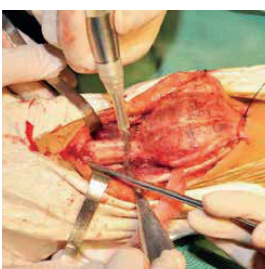
Brain surgery



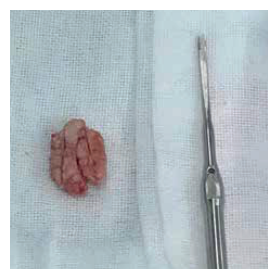
Pediatric surgery



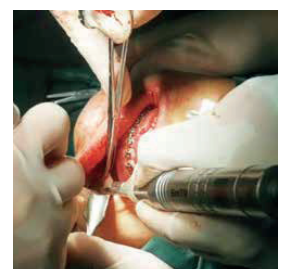
Endoscopic surgery



Bone oncology



Maxillofacial and plastic surgery



impla net

The permanent balance

Technopole Bordeaux Montesquieu

Allée François Magendie

33650 Martillac

Tel. : + 33 557 995 555

Fax : + 33 557 995 700

implanet.com



marketing@implanet.com

Follow us on



All medical devices mentioned in this document are CE marked according to Directive 93/42/EEC and its amendments. The medical devices mentioned in this document are class class IIb devices are CE 0123 marked with TUV. Before using a product, please refer to the instructions for use.

Consult product labels and inserts for a complete list of indications, contraindications, risks, warnings, precautions and instructions for use.

SMTTP
TECHNOLOGY 



SMTTP Technology Co., Ltd. 1F&4F, Building A, Emerging Industry Industry Incubation Center, Zhangjiagang Free Trade Zone, Jiangsu, 215600, China